

Sketch for steering alignment tool:

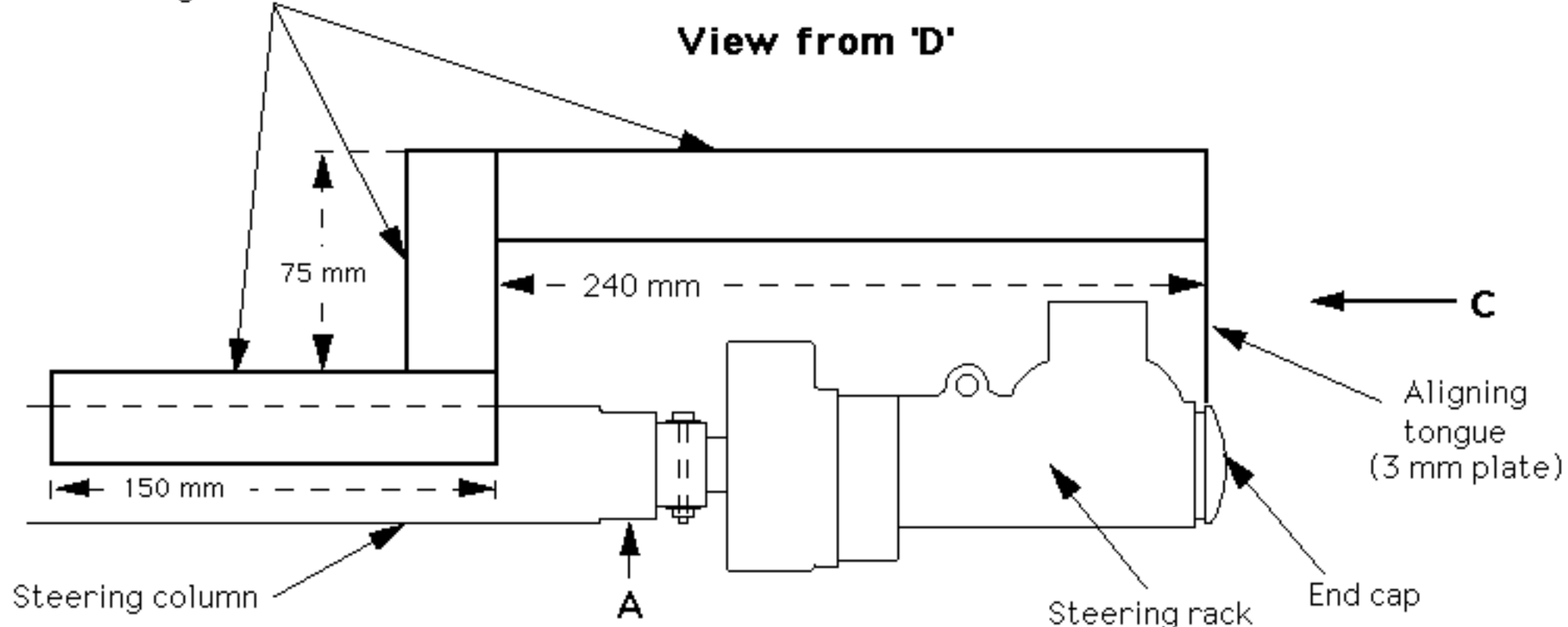
In use, slide assembly back and forth along steering column, altering rotational position of rack until aligning tongue just kisses rim of end cap on rack body, then tighten rack mounting caps.

Dimensions and materials not critical, except, of course, the relationship of the tongue to the angle iron which rides on the steering column.

the 'leaned over' design makes it much easier to see (aided by a torch) when the tongue is close to the rack end cap.

When constructing, it may help to know that the radius at 'A' is 1mm less than that of the cap on the rack. A .5mm feeler and a steering column make a good jig.

30.5mm Angle iron



View from 'C'

