

Fuel tank filter

Below are some photos of the fuel filter which is inside the fuel tank.

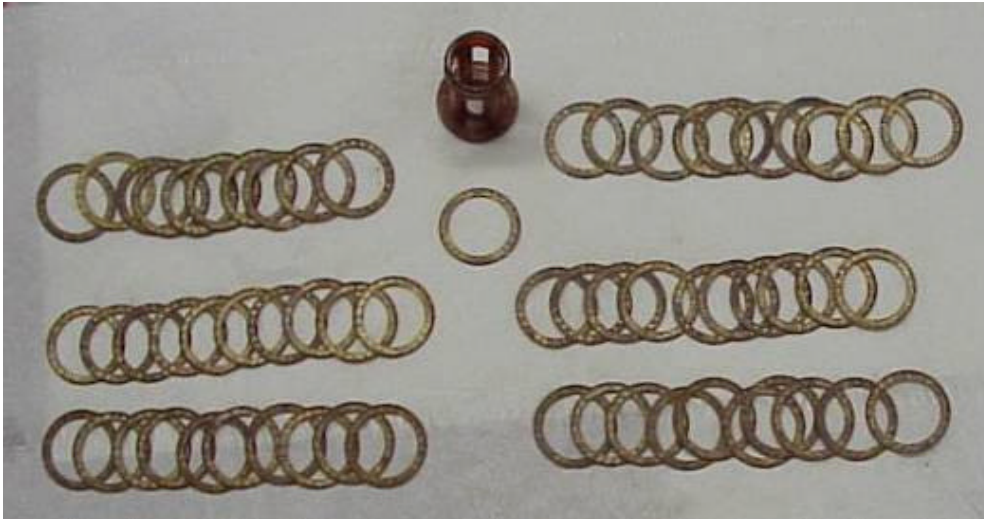


Fig. 1 : The washers + the nylon frame



Fig. 2 : A washer



Fig. 3 : The 3 other parts (bottom plate + 2 rings) and the washers mounted on the frame



Fig. 4 : The complete filter

There are 61 bronze washers .50mm thick. Each washer has on one side a number of raised segments .02mm high. The washers are stacked on a nylon frame which is pierced by the nylon fuel pipe which runs up the right frame member to the fuel pump. Fuel in the tank must pass through the spaces created by the raised segments on the bronze washers to reach the fuel pipe.

Pictures and text by Carter Willey